



# **THE RAINBOW MAN**

by **Paul Harrington, Susan Harrington and Judith Watts**

**John Clare Books,  
London**



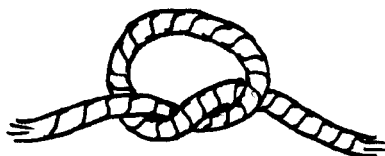
# CAPTAIN'S LOG

THE RAINBOW MAN is a new musical version of the timeless tale of Noah and his ark. Suitable for schools or youth groups, the show can be performed with very few resources and a small number of actors.

In the original production, for instance, there was a cast of about twenty with everyone but the main characters and the 1920's chorus doubling as the crew of the ark and as animals.

Conversely, if a big production is envisaged in a school for example, older children or possibly teachers could take the main parts such as Noah and Mrs Noah while the number of animals – played by younger children – is limited only by the space available on stage. Again in the original show, masks and glove puppets were used instead of full animal costumes, mainly to keep down the cost.

No scenery as such is needed but any nautical items such as lifebelts, rope and tackle, ships lanterns etc that can be borrowed will all add realism. In short, The Rainbow Man can be staged on the proverbial shoe string.

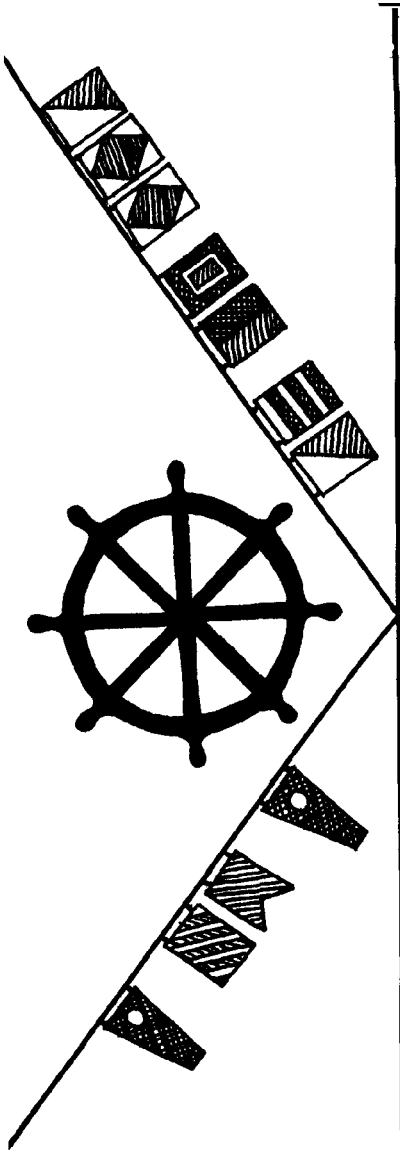


The original Rainbow Man – first performed in a church hall – was given a 1920's flavour. This struck a note of happy incongruity and provided a Bertie Wooster-like air of comedy to the narration. Four flappers and a young gent comprised the 1920's chorus and there was found to be ample scope here for costume and choreography.

As to the score which contains a variety of musical styles, a simple melody line and guitar chord symbols are provided in this book as well as a tape cassette of the show. This will enable the cast to learn the songs quickly as well as giving an indication of how the music was performed in the original show.

The Rainbow Man can be done with just a piano and percussion but clearly the more instruments available, the fuller the sound. The addition of brass or woodwind instruments would be an interesting project for older music scholars. For the first public performance of





the show we used a piano, electronic organ, guitar, bass guitar and drums – as on the enclosed cassette.

There are notes of guidance with each song for those who want them, but the essence of The Rainbow Man is improvisation and the fun to be had adapting the show to suit local circumstances. There are also blank spaces in the book for you to make your own notes as you go along.

We do hope you will enjoy your trip aboard the ark!

Paul Harrington  
Susan Harrington  
Judith Watts

#### List of Characters

Noah  
Mrs Noah  
The Voice of God  
Boatyard Foreman  
4 Bees  
2 Singers for the Duet  
Falling Rain  
Raven  
20's Chorus (any number)  
Animals (any number to suit players)  
optional – Slinky Ladies for Painted Rainbow Song

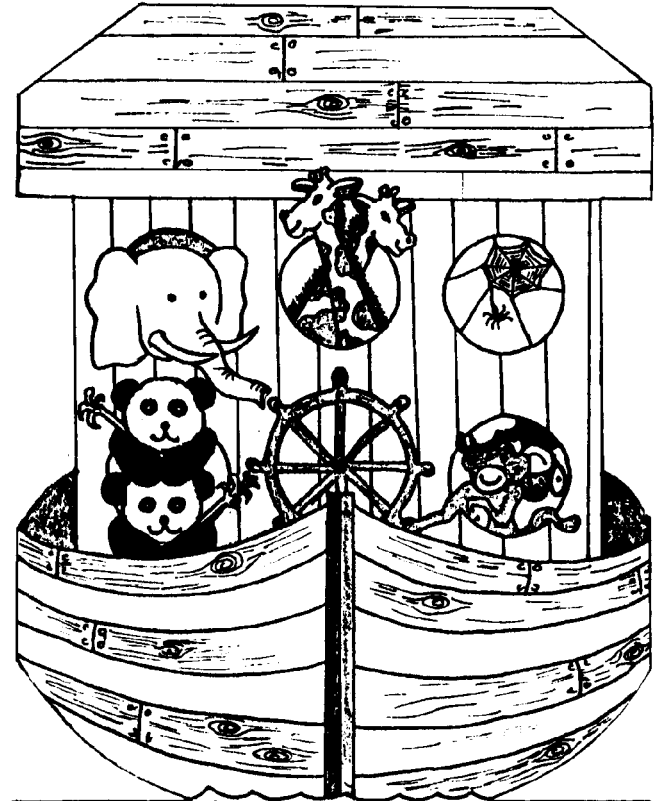
# The RAINBOW MAN

## FIRST HALF:

The Rainbow Man  
 Noah Noah that's my Name  
 Perhaps Maybe  
 Noah has the Knowhow  
 Two by Two  
 Bee Song  
 Falling Rain  
 Indian Rain Dance  
 My baby won't stop Crying  
 Baby don't Cry  
 Zebra Song  
 Noah had a Party



by  
**Paul Harrington,  
 Susan Harrington  
 and Judith Watts**

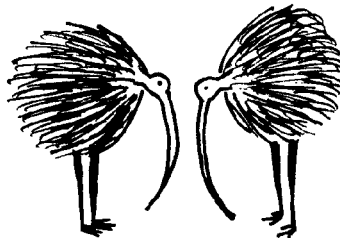


**THE RAINBOW MAN**  
 DORSET GARDENS CHURCH HALL  
 MAY 6<sup>th</sup> 7<sup>th</sup> 8<sup>th</sup> 1982 at 8-00 PM  
 ADMISSION BY PROGRAMME.  
 ADULT .... 80P  
 CHILD .... 50P  
 FAMILY PROGRAMME (2 ADULTS-2 CHILDREN) £2-00

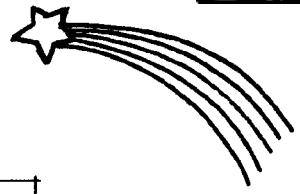
NIGHT
T
F
S

## SECOND HALF:

Selah  
 Hate Song  
 Dark Side of the Moon  
 Don't leave me Dreamer  
 The Raven Song  
 A Speck of Dust in my Eye  
 A Painted Rainbow  
 Drifting Light  
 Two by Two  
 The Rainbow Man



# The RAINBOW MAN



**ALL**  $\text{♩} = 108$

**C** **Fmaj7**

Thrown like a shooting star in my vast sleep

**C** **Fmaj7** **F**

opened my eyes to take a peep

**Fm** **C** **Am**

see His promise stretched from you to me in

**C** **Fmaj7** **C**

blazing co-lours that brightly flame

**Fmaj7** **F** **G7** **C** **Am**

Rain-bow - man - a - gain Yes I hope that some day soon be - yond life's deep la - goon we'll

**F** **G7** **Am** **F** **G7**

see the man who walks in clouds of shi - ning rain Yes some - day soon we'll



Handwritten musical score for the opening title song. It consists of two staves of music in treble clef. The first staff has a common time signature 'C'. The melody is written with quarter and eighth notes. Chords are indicated above the staff: C, Am, F, G, 1 A, and 2 A. The lyrics are written below the notes: "meet the Rain-bow man a-gain a-ga in in a-gain and a-gain and a gain a-ga in". The second staff continues the melody with chords -F, G, A, F, G, A. The lyrics continue: "gain and a-gain and a gain a-ga in".

Where the rippling river meets the rolling sea  
 He'll whisper all his words to you and me  
 Where the white wings of doves beat  
 We'll never touch the ground with our feet  
 There beyond where the sun meets the rain  
 Someday soon we'll meet the Rainbow Man again  
 Yes, I hope that someday soon  
 Beyond life's deep lagoon  
 We'll see the man who walks in clouds of shining *rain*  
 Yes, someday soon we'll meet the Rainbow Man  
 again, again,  
 Again, and again and again, again . . .



#### Your Notes

IN the original version of The Rainbow Man this opening title song was sung by all the cast, quietly at first, gradually building in volume. Everyone except Noah and Mrs Noah – offstage at this point – was dressed in a basic, all-purpose costume of dark tops and black trousers or jeans. This allows for quick changes and does not detract from other more colourful or exotic costumes which hopefully you will be able to use. Also it is a cheap way out! At the end of the song the stage is in darkness so that Mr and Mrs Noah's bed can be brought on. They are in their nightclothes.

108

**NOAH,**

No-ah No-ah he was in his bed and the Lord said and the Lord said

NOAH-

Build me an ark! Build you a what? Build me an ark!

**THAT'S**

What in the dark? No, build me an ark, I want you to build me an ark.

MY

No-ah No-ah he was in his bed and the Lord said The world's gone bad

**NAME**

And I'm very sad I'm sending a flood Sending some mud?

No, a great flood, But I can't float, I want you to build a mighty boat.





Handwritten musical score for the song "Noah's Ark" by The Beatles. The score is written on six staves, each with a treble clef and a key signature of one flat (B-flat). The lyrics are written below the notes, and the chords are indicated by letters above the notes. The lyrics are: "No-ah No-ah His wife she said Don't be ri-di-cu-lous you're a fool You can't build an ark 'cos you're too small Too small? Well not very tall, Not very tall? And I'm not keen on the idea at all! Noah, Noah, Is that my name? Yes it's still the same This is the strangest dream of my life, Caused a bloomin' row with the wife, Is it all a silly game? Who is going to take the blame? I'll build your ark 'Cos Noah is my name..."

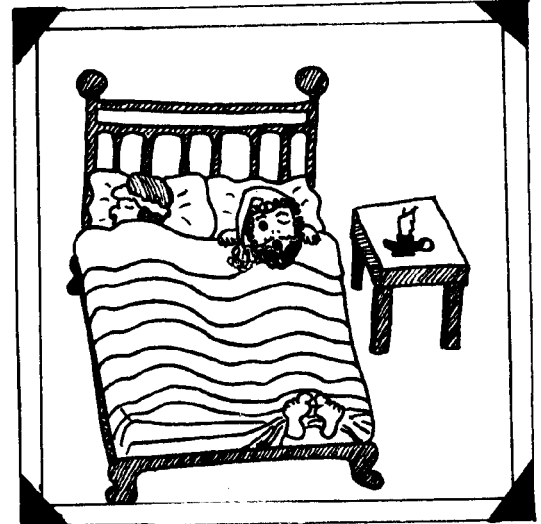
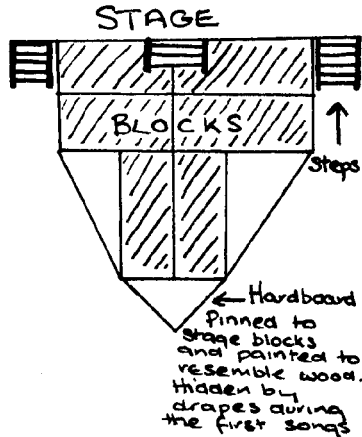
The chords used in the score are: F, C, ALL, MRS NOAH, NOAH, Cm, Fm, G7, and ALL. The lyrics are: "No-ah No-ah His wife she said Don't be ri-di-cu-lous you're a fool You can't build an ark 'cos you're too small Too small? Well not very tall, Not very tall? And I'm not keen on the idea at all! Noah, Noah, Is that my name? Yes it's still the same This is the strangest dream of my life, Caused a bloomin' row with the wife, Is it all a silly game? Who is going to take the blame? I'll build your ark 'Cos Noah is my name..."

NOAH F C F C ALL F C NOAH F C  
 No-ah No-ah, Is that my name? Yes it's still the same I'm so-ry I kept you a-  
 F C F C F C MRS NOAH F C  
 wake half the night, But it's so di-fere-nt F in the light. In the light?  
NOAH F C F C MRS NOAH C NOAH G7 C  
 I'm so glad that I have sight, You have sight? The Lord's on our side so we'll be al-right!

PLAN OF STAGE USED  
IN ORIGINAL SHOW.

Your Notes

THE final verse of this song reverts back to the original tempo and key. The stage had already been built out to resemble the prow of the ark, but as of course at this stage in the story the boat does not exist, it was disguised with drapes. A table and chair was placed upon it to resemble the interior of Noah's house.



# 1920's CHORUS

♩ = 128

**TWENTIES CHORUS**

G E7 A7 D7 G E7 A7 D7 G E7

A1 - though the Lord may be on his side We don't know  
 if we want to come on this ride To him it  
 seems so ve-ry clear but we're not so keen on the whole i - dea.

A7 D7 G A7 D7 G C Cm G Bb A Ab G-Gb-G

THE 1920's chorus is chiefly used for the narration in the show. Therefore they need to be able to sing clearly to carry the story forward. A Bertie Wooster-like flavour to their appearances was attempted in the original show with four girls dressed in 1920's style drop

waistline, sailor-collared dresses to maintain a nautical air. The young gent also part of the chorus was in a sailor type costume as well, but if available, an old style, long bathing costume would be highly appropriate and would add to the fun! The

young man spoke the words of the 1920's chorus into a megaphone in a suitably affected voice over the girls' singing.

Your Notes



# PERHAPS MAYBE

♩ = 125

**ALL G**

No - ah says we're all slow-ly dy - ing

lack of love we're all cry - ing

No - ah knows all our wor - ries and stri - fe

He's going to take us to a new li - fe

wants to build an e - nor - mous boat

How does he think he'll keep it a - float? He

has no scales, no charts, no maps, He seems so sure, who knows, per - haps.....

*rit.*

♩ = 94

*a tempo*

REFRAIN

Who knows per-haps may-be? Does he just see what he wants to see? Who knows per-haps may-be? Does he be-lieve in you and me? Who knows per-haps may-be?

Chords: G, Am7, G, Am7, G, Am7, D7



He talks of clouded colours in the sky  
 We can't seem to see them though we try  
 Noah what's going on in your head?  
 Perhaps you should take a rest, stay in bed  
 All those creatures in one big boat  
 These ideas seem to us so very remote  
 Will this whole dream just collapse?  
 He seems so sure who knows perhaps ...



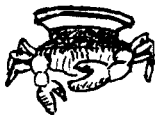
(REFRAIN)

Noah you see is our trusted friend  
 We'll all stick by him to the end  
 What can he borrow what ropes can he mend  
 Is it a fashion, is it a trend?  
 We can't help smiling, we don't want to offend  
 We're sure he's off his rocker, gone round the bend!  
 Now he's given us sailor's caps  
 He seems so sure who knows perhaps ...

(REFRAIN)



<p>THIS song begins with the cast in their basic dark costumes and gives an opportunity for a Fifties-style rock and roll number.</p>	<p>Towards the end Noah and Mrs Noah enter – now in their main costumes – studying an elaborate blue-print of the ark.</p>	<p>Your Notes</p>
---	--	-------------------



SPOKEN OVER RAIN CHORD\* REPEATED AD. LIB

\* 6th Position



Perhaps we ought to give it a go, 'Cos I'm sure Noah knows, you know!

DURING the above spoken part – while the guitar or piano plays the 'rain chord', see music – members of the cast should be getting ready to build the ark. The next song, 'Noah has the know-how', is particularly long just for this purpose. In the original show the ark had been built in advance using stage blocks and hardboard. During the song the wraps were taken off to reveal the craft and the cast brought on genuine ship's tackle such as lifebelts, coils of thick rope etc. We even had a real miniature ship's wheel for Noah to steer the ark. The boatyard foreman who speaks this song was given a clipboard with the words attached to help his memory while he gave the impression of overseeing the work.

# NOAH HAS THE KNOW-HOW

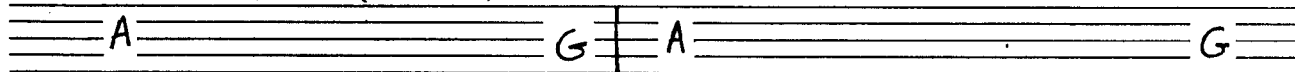
[ALL] Am E7 Am E7

REFRAIN No - ah has the know-how. No - ah eint no or-din'ry man

No - ah knows you know, you know, he knows.

VERSE -spoken

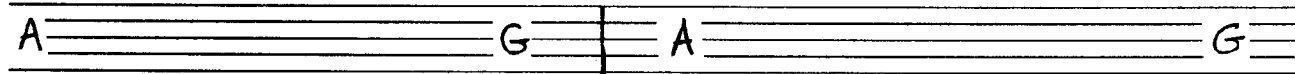
# BOATYARD FOREMAN (SPOKEN)



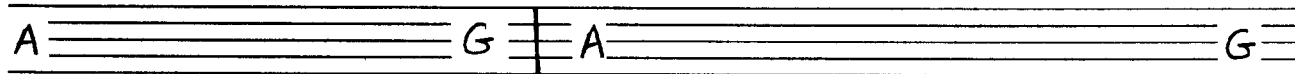
Verse: I'll tell of the tale of Noah, As happened in days gone by,



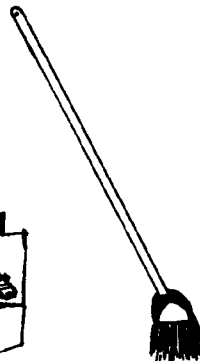
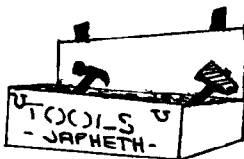
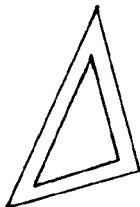
How he had visions and fancies, That's right of rainbows int' sky.

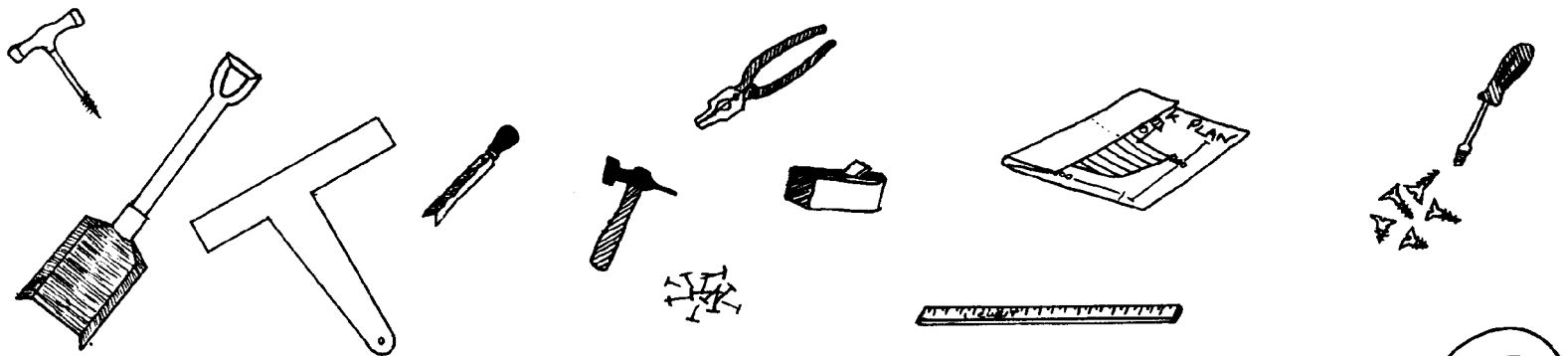


One day running to his fellows, He said, "Help me build an ark!"

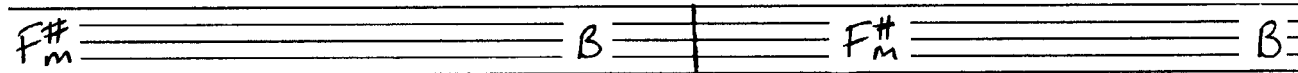


Well, imagine us lads and lasses looking at each other, by gum, it were a lark!

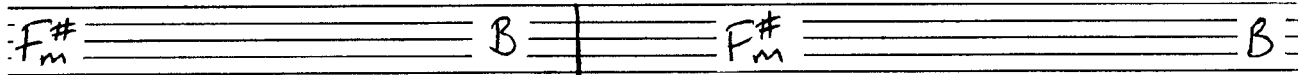




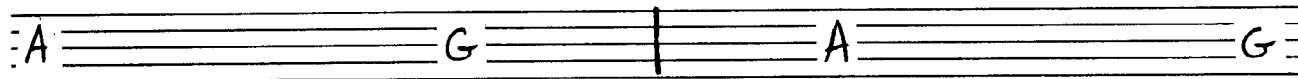
What a jolly fellow, we thought, To make such frivolity and fun



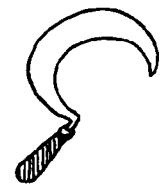
For he knew we liked such sport, Aye, it were funny how we got caught,



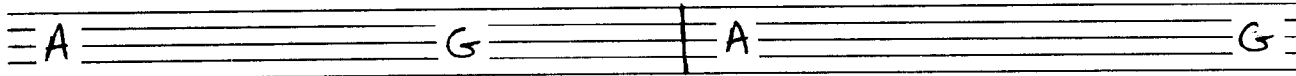
We soon realised he weren't joking, That he were serious minded it weren't no game to him



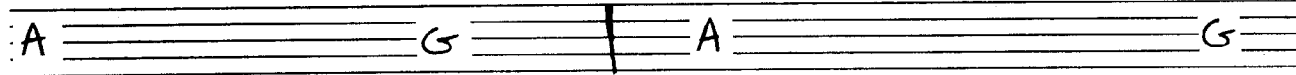
We said, "Yes," 'cos we were out of work, And we hadn't a penny to our name



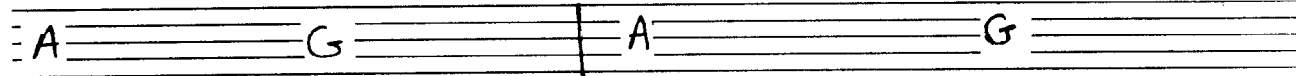




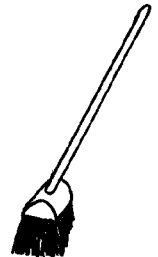
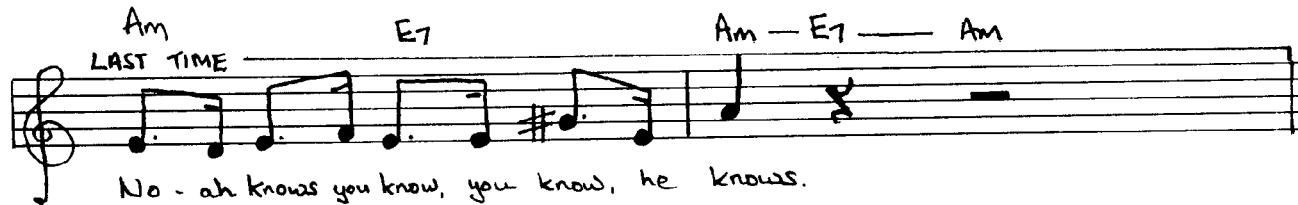
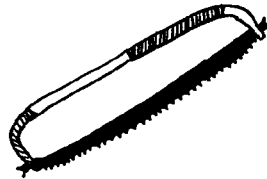
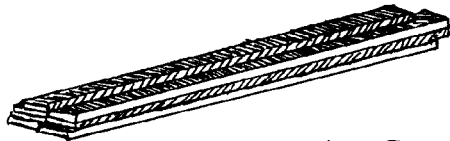
There a beautiful day for boat-building. As we gathered us one by one



We began by cutting down trees. As we all started singing this happy song



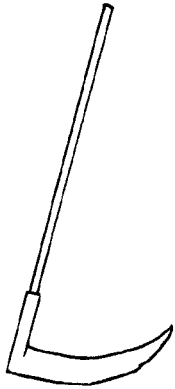
Noah has the know-how and Noah has the plans.



ALL:  
(REFRAIN)

**BOATYARD FOREMAN**

(SPOKEN): To make an ark of gopher wood  
Was all he asked of us  
All that noise, moans and groans  
Ee you've never heard such a fuss  
I was high up like ont' scaffold  
And I saw this bird go by  
Well I 'spect you can guess what happened  
Aye it caught me right int' eye  
So I shouts down to Noah  
This will be biggest boat ever built  
But I hate to say it old fellah  
This bit at back got a tilt  
Don't worry says Noah  
It'll be alright when it's afloat  
It will not tilt and anyway you won't  
Get wet with a waterproof coat  
By gum I wish I's as clever as that  
Even when he's up a tree  
He seems to know his stuff  
Then that song came back to me:  
Noah has the knowhow and Noah has the plan . . .



**BOATYARD FOREMAN**

(SPOKEN): We thought Noah was noble  
So stately and grand  
As he stood there smiling  
With a plank of wood in his hand  
The length must be three hundred cubits  
One, two, three, four give me that saw  
Five, six, seven, add some more  
Is this the ceiling or the floor?  
Aye there's nothing like nails for knocking  
But you can tell an amateur  
There's nothing like a door for locking  
When you don't want it secure  
We were told by Great Noah  
To pitch it yes inside and out  
Aye like good old Noah  
It would be so strong and stout  
I says to my mate Harry  
I reckon we're nuts, you see  
This 'ere boat will never float  
But then this song came back to me:  
Noah has the knowhow and Noah has the plan . . .



ALL:  
(REFRAIN)



ALL: (REFRAIN)



**BOATYARD FOREMAN (SPOKEN):**

When the ark was finished we had a party  
 Well as a sort of celebration  
 Never have seen so many people  
 Everyone found a new relation  
 Noah stopped muttering of water and rations  
 Let's all have a cup of tea  
 Then he came and sat beside us  
 This seagull set right on his knee



Thanks to you all he said  
 For believing in my dream  
 It were tough going I know  
 'Cos I know you weren't all that keen  
 We'll never forget how we all laughed  
 Aye and that wonderful look on Noah's face

It were like we had found new friends  
 Who we knew we could never replace  
 It were a Sunday morning  
 Suddenly this fellow breaks into a ditty  
 In honour of our friend Noah  
 I think you'll agree it's quite pretty:  
 Noah has the knowhow and Noah has the plan . . .

NOAH in the original show went out into the audience during this chorus and 'caught' imaginary animals, at the same time teasing younger children in the front seats by catching them in a large butterfly net.



Your Notes

# 1920's CHORUS

ALL:  
 (REFRAIN)

**TWENTIES CHORUS**

No-ah col-lected ev'-ry crea-ture from all — the earth  
 A male and a fe-male to — each berth



Handwritten musical score for guitar in G major. The score consists of six staves of music with lyrics and guitar chords written above the notes.

Staff 1: *D7* *G* *G7* *C* *Cm*

Staff 2: *G* *Bb* *A* *A7* *G* *Gb* *G*

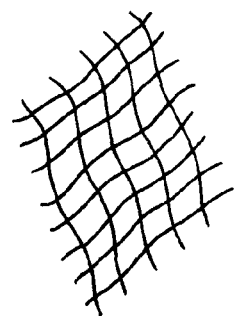
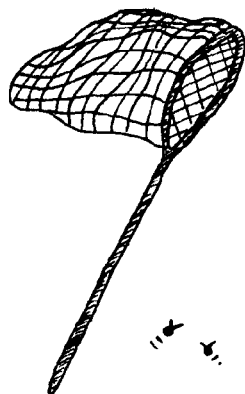
Staff 3: *G* *E7* *A7* *D7* *G* *E7* *A7*

Staff 4: *D7* *G* *E7* *A7* *D7* *G* *E7* *A7*

Staff 5: *D7* *G* *G7* *C* *Cm*

Staff 6: *G* *Bb* *A* *A7* *G* *Gb* *G*

Lyrics: *Ev'ry an-i-mal that he could find 'Cos they would be drowned if left be-hind He went out with a rope and a net Care-fully ca-tching what-e-ver he could get Ev'ry thing that crawled or flew You should have seen him get them two by two by two!*





# TWO

## BY

# TWO

Your Notes

**ALL** lively, swinging tempo

132

G F G F G F G

Ba da ba da ba — doo, Ba da ba da ba — doo,

F G F G F

Two by — two — Ba da ba Two by — two, from the snail — to the

G F G

co-cka — too, From the ti — ger to the kan-gar — oo, from the

C

li — on — to the — cat — from the leo — pard

D C

to the — rat, from the hi — ppo to the — dog — from the

G

cro-co-dile to the wa-ter-hog — from the **FASTER** hen to the

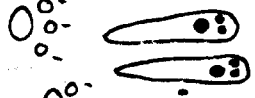
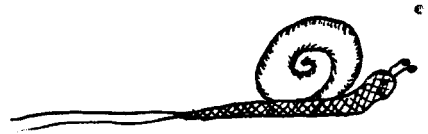
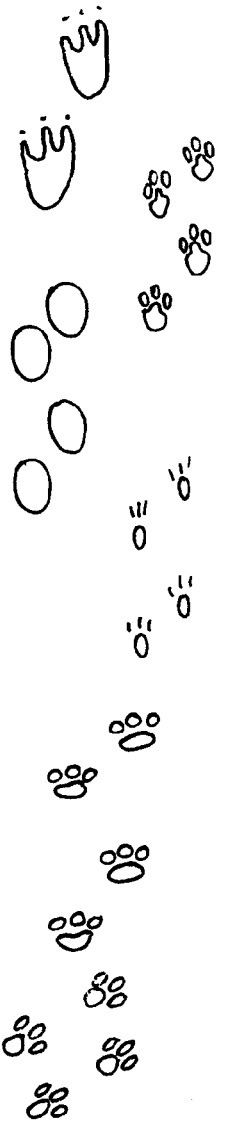
IT is particularly effective in this song if the seating can be arranged in the hall with a centre aisle. The animals can then come aboard the ark in pairs through the

audience from the back of the hall and everyone can get a good look at them! They should all end up on stage in time for a big finish to the song. They now

become the 'crew' of the ark and do not appear in animal costume again until they leave the boat in the second half.

snake From the bull to the big old drake From the  
 hen to the snake From the bull to the drake  
 From the hen to the snake From the bull to the drake  
 From the A7 rab-bit to the hare From the  
 giraffe to the griz-zly bear From the rab-bit to the hare  
 From the giraffe to the bear From the rab-bit to the hare

*Handwritten musical notation on a grand staff with lyrics and chord symbols (C#, D#, G#, A7, E).*

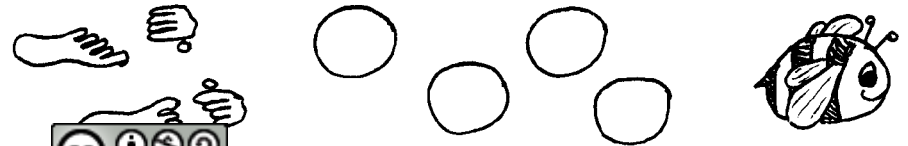




Handwritten musical score with lyrics and chord symbols. The lyrics are: "From the giraffe to the bear From the fox to the chimp. from the fox to the chimpan-zee From the fox to the chimp From the el-e-phant to the bee From the fox to the chimp From the el-e-phant to the bee From the fox to the chimp From the el-e-phant to the bee? the el-e-phant to the bee?"

Chord symbols: D, A, Bb7, Eb, F, Eb, Bb, Bb7, Eb, Ebm, Bb, Ab-A, Bb7.


Other markings: "SLOWER", "3", "4", "7", "11", "12", "13", "14", "15", "16", "17", "18", "19", "20", "21", "22", "23", "24", "25", "26", "27", "28", "29", "30", "31", "32", "33", "34", "35", "36", "37", "38", "39", "40", "41", "42", "43", "44", "45", "46", "47", "48", "49", "50", "51", "52", "53", "54", "55", "56", "57", "58", "59", "60", "61", "62", "63", "64", "65", "66", "67", "68", "69", "70", "71", "72", "73", "74", "75", "76", "77", "78", "79", "80", "81", "82", "83", "84", "85", "86", "87", "88", "89", "90", "91", "92", "93", "94", "95", "96", "97", "98", "99", "100".



SPOKEN OVER RAIN CHORD REPEATED AD. LIB.

Everything that's on the earth. Tell me, does that mean me?

I am a humble worker. A little honey bee.

THE **BEE** Song 

**PUNK BEES** (SHOUTED)

E G D | E G D | E G D | REPEATED

Refrain: I'm a honey. I'm a honey, I'm a honey bee,

Buzz buzz buzzer me, Buzz buzz buzzer me, Buzzer me.





Verse: He says honey, come home for tea

CHORDS FOR VERSE SAME AS CHORUS (E, G, D etc.)

Who does he thinks he's kidding, you or me?

Don't keep gawping at my body

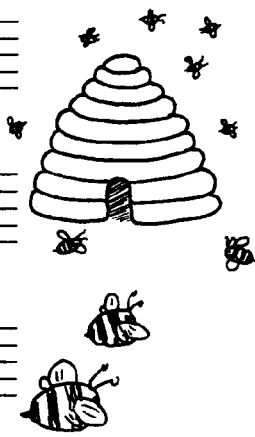
No one can take my stripes away from me.

(REFRAIN)

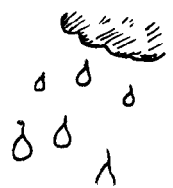
I know he thinks he is smarter than me  
Can't he see there ain't no fee for loving me  
Those bright white teeth keep shining at me  
Now I know you're laughing at me

(REFRAIN)

Bye bye honey, bye bye honey honey bee  
Bye bye honey, bye bye honey honey bee  
Bee, bee, bee, bee . . . (Repeat and fade)



<p>THE more lively this song the better! We started the number with an empty stage and an angelic voice off-stage singing the introductory lines to the tune of a well-known hymn. However, you could use any appropriate melody – the school song, perhaps? The music then hits out in true</p>	<p>punk style and the bees fly onto the stage and let the audience have it. The song was yelled rather than sung as the bees pogoed up and down. We used four people dressed in black and yellow stripes. One of them also had an electric guitar and mimed to the music coming from the band.</p>	<p>Your Notes</p>
--	--	-------------------



# F A L L I N G R A I N

**DUET** C Gently

*74*

v.1 Here comes the rain sing-ing in my ears a-gain The sky is fall-ing

Can't you hear it call-ing? Echoes that soft-ly pace Rain drops are catch-ing-

Seeds of hea-ven on my face Rain -drops are fall-ing

v.2. Wish up-on a rain-drop Its ma-gic will come true etc.

REPEAT OF LAST LINE

v.3. The sky is fall-ing Can't you hear it call-ing you?

CONTINUE IN A SIMILAR WAY TO VERSE 1.

Wish upon a raindrop  
Its magic will come true  
God blessed the rain  
As He first blessed you  
The rain is singing  
The spring wash of love  
Drips like gems  
Drops gentle as a dove

All our pain  
Distilled into falling rain  
Trickling again and again  
The falling seeds of rain  
Here comes the rain  
Singing in my ears again  
The sky is falling  
Can't you hear it calling?  
The sky is falling  
Can't you hear it calling?

THIS duet is intended as a contrast to the previous item and is therefore sung sweetly. To add movement

the four girls in the 1920's chorus did a simple dance with umbrellas.

Your Notes





v2, 3 and 4 We can shout, we can scream We're a nightmare not a dream

Don't take chances with our name Just keep throwing down the rain pow.

wow pow, wow We can kill we can maim, pow wow pow wow Don't take

prisoners it's a game, pow wow pow wow

v. 4. We can



**We can shout we can scream**  
**We're a nightmare not a dream**  
**Don't take chances with our name**  
**We just keep throwing down the rain pow-pow**  
 pow-pow  
**We can kill we can maim pow-wow pow-wow**  
**Don't take prisoners it's a game pow-wow**  
 pow-wow

**We'll be your friend not your foe**  
**We've got clouds full of snow**  
**We are evil and cruel**  
**Especially if you're very small pow-wow pow-wow**  
 pow-wow  
**We'll destroy by smashing about pow-wow**  
 pow-wow  
**We can even cause a drought pow-wow pow-wow**



D G A D G A

The rain keeps on fall-ing through my back door

D G A D G A

The rain keeps on fall-ing right thro' my back door

G D G D A

My ba-by is cry-ing what can I do?

D D

Oh will you help me? Will you help me, will you?

C#m F#m C#m F#m

I want you close to me That's all I know

C#m F#m Bm

I want you all the time be-cause dar-ling I love you



G A D G D

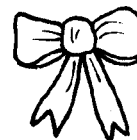
Da capo at fine

Coda

Oh will you help me? Will you help me, will you?

Will you help me will you? \_\_\_\_\_

Oh will you? \_\_\_\_\_



Your Notes

THIS is a duet for Noah and his wife, and is best given a country music feel to it.



SPOKEN OVER RAIN CHORD REPEATED AD-LIB.

We'll sing to your baby. And then your baby won't cry.



Your Notes

THIS lullaby is intended to be soothing and reassuring, and is sung by all the members of the cast. We had two large pink bunny rabbits to create a dreamy, childlike quality.

# Baby Don't Cry



♩ = 66

ALL C

Dm Em Dm C Dm Em Dm

Hush, gen-tle ba-by — don't you — cry. — And we'll sing you a lull-a-by —

Fmaj7 G7 Fmaj7 G7

Dream-ing of dai-sies splashed with dew — Ap-ple — blos-som and skies of blue —

C Dm Em Dm C Dm Em Dm

Dim-pled and soft in your cradle you lie — Ten-der to touch as the clouds that go by —

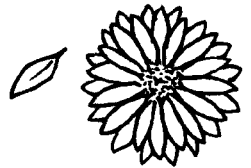
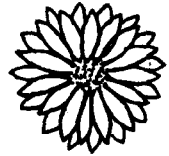
Fmaj7 G7 Fmaj7 G7

We'll rock and swing you till you're a - sleep No dropping of tears in your slumber so deep, oh so

C Dm Em Dm C r3 times

oh so deep — After 3rd verse Hush Hush go to sleep Hush!

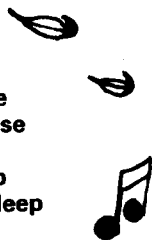
3-deep







Hush gentle baby, don't you cry  
 And we'll sing you a lullaby  
 Legs all bare and crumpled-up toes  
 Soft pink cheeks and a small freckled nose  
 Your smile so sweet like a soft petalled rose  
 Rocked in a cradle of ribbons and bows  
 We'll rock and swing you till you're asleep  
 No dropping of tears in your slumber so deep  
 Oh so deep, oh so deep



Hush gentle baby don't you cry  
 And we'll sing you a lullaby  
 Hope you see bright stars and yellow moons  
 Hope you walk in leafy lanes and sing many tunes  
 In slumber deep you turn and sigh  
 Your fingers curl up to say good-bye  
 We'll rock and swing you till you're asleep  
 No dropping of tears in your slumber so deep  
 Oh so deep, oh so deep  
 Hush, hush, go to sleep . . . (Repeat and fade)



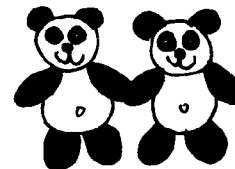
# The ZEBRA Song

Handwritten musical notation for "The Zebra Song". The score is written on three staves in treble clef with a key signature of one sharp (F#) and a 4/4 time signature. The tempo is marked as 116. The music is divided into three sections: "1ST GROUP", "2ND GROUP", and "3RD GROUP".

Lyrics for the first section:  
 so ma-ny cra-zy crea-tures May-be i'm in a dream Boy, oh, boy you should see

Lyrics for the second section:  
 The one that I've just seen! Must be the mad-dest one of The lot for he has got

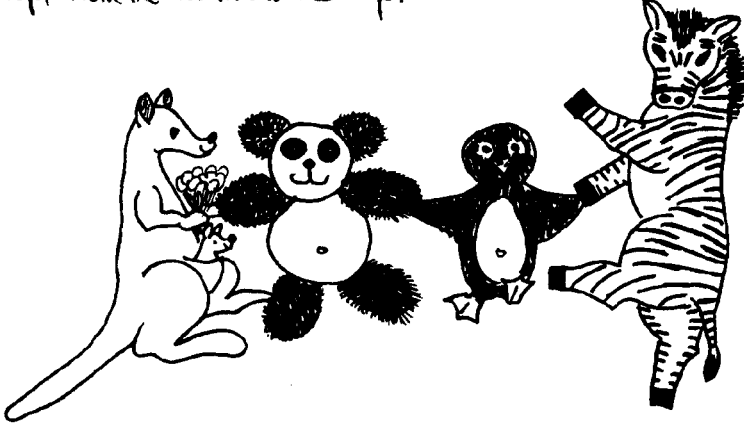
Lyrics for the third section:  
 Black and white stripes From — the bot-tom to the Top, from the





bot-tom to the top, From the bot-tom to the top, From the bot-tom to the top.

**He's not like a penguin or a bouncy kangaroo  
I bet he's not so different, from me and you  
I guess he has a mind, a heart, and even a tail too  
Inside that skin he's just the same as me and you**  
 same as me and you  
 same as me and you  
 same as me and you



**Sometimes I realise how different I am  
But aren't we all part, of the world's great plan?  
Those stripes may bother me, and you but I feel sure  
That he needs lots of love just like we all do**  
 just like we all do  
 just like we all do  
 just like we all do

**Now it don't matter from where he came  
Brown black or white, we are all the same  
And don't you worry 'bout the colour of his skin  
For we'll grow to love him, as one of our kin**  
 love him as our kin  
 love him as our kin  
 love him as our kin



**ANOTHER** entry from the back of the hall!! Here Noah leads in the zebra and as the music is playing introduces him to younger members of the audience. We found that it was effective to split the remaining

cast into two groups thus emphasising the black and white theme of the song. We also were able to use a five-string banjo – as on the cassette tape – to give a hoe-down feel to the number.

Your Notes

# 1920's CHORUS

\*This chorus does not feature on the tape cassette of The Rainbow Man...



TWENTIES CHORUS

G E7 A7 D7 G E7 A7 D7

Life could be stor. my on No-ah's boat

E7 A7 D7 G E7 A7 D7

Have you liked it so far can you cope?

G Bb A

'Cos the chaps who wrote it really didn't know if eggs like you would en-

A7 G-GbG G E7 A7 D7 G

joy this show! What they had in their minds we aren't sure

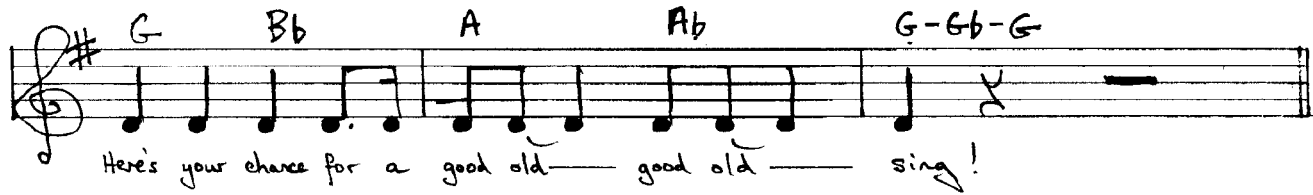
E7 A7 D7 G E7 A7 D7 G

We hope you're having fun it's not a fright-ful bore

E7 A7 D7 G E7 A7 D7 G

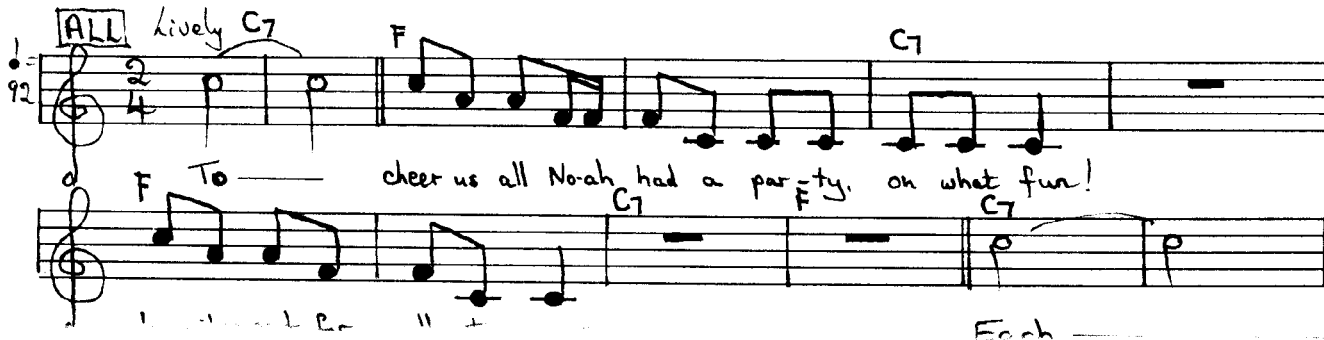
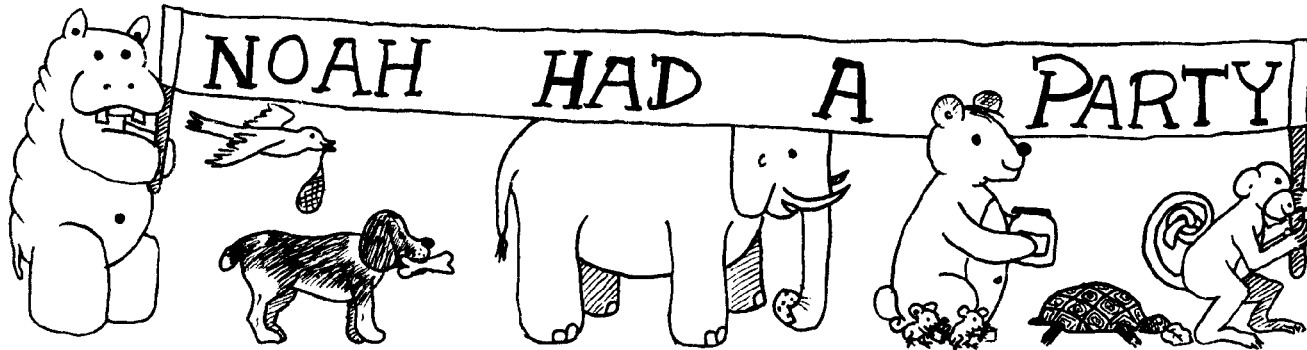
How 'bout helping us by joining in





THE 1920's chorus invite the audience at this point to join in the next song. We provided large boards with the words written out to steer everyone through this rather complicated number which builds as it goes along. A member of the cast pointed out the words and Noah was unofficial conductor.

Your Notes



Handwritten musical score for a song. The lyrics are written below the notes, and the chords (F and C7) are written above the notes. The lyrics are:

couple brought their fa-vour-ite food and the com-pan-y ate in joy-ous mood The  
 mice they brought their pieces of cheese and the com-pan-y ate in joy-ous mood  
 Each couple brought their fa-vour-ite food and the com-pan-y ate in joy-ous mood The  
 v. 2 cats they brought their bowls of cream The  
 v. 3 bir-dies brought their sun-flower seeds  
 v. 4 bears they brought their honey jars  
 v. 5 dogs they brought their juicy bones  
 v. 6 giraffes they brought their tree-top leaves  
 v. 7 monkeys brought their coco-nuts



AS this song has a Tyrolean feel to it, the cast devised a clapping dance to the tune. The aim is for everyone to have a good time as this is the finish of the first half. During the interval children from the audience can be invited aboard the ark to be served with orange juice, although this does mean that some members of the cast will not get a half-time break. If the show is on for several nights, perhaps a rota could be devised.

Your Notes

C7 F C7  
 v. 7 The mon-keys brought their co-co-nuts, The giraffes they brought their tree-top leaves, The  
 F C7  
 dogs they brought their jui-cy bones, The bears they brought their ho-ney jars, The  
 C7 F  
 bir-dies brought their sun-flower seeds, The cats they brought their bowls of cream, The  
 C7 F C7 F C7 F  
 mice they brought their pieces of cheese and the com-pan-y ate in joy-ous mood.  
 But — No-ah brought them all to-ge-ther Fast Shell and scale and fur and fea-ther!



**END OF FIRST HALF.**